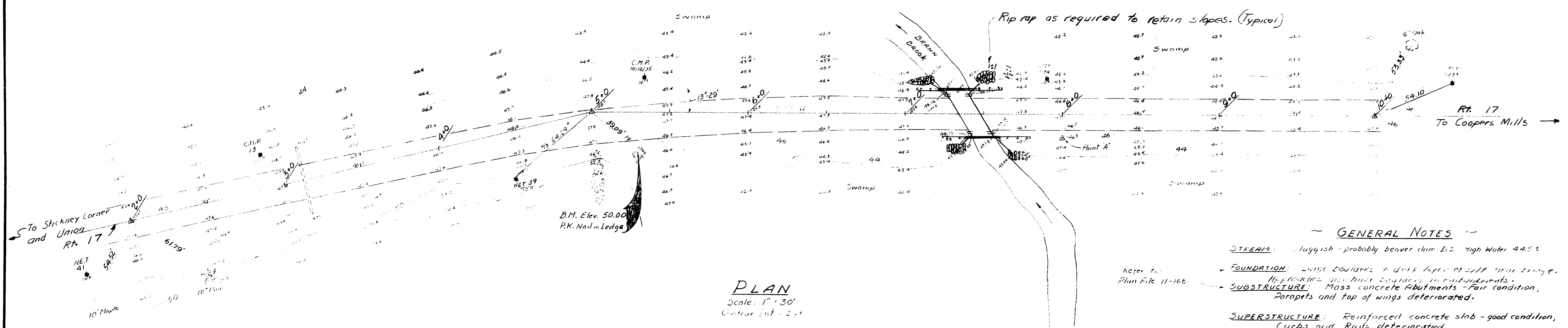
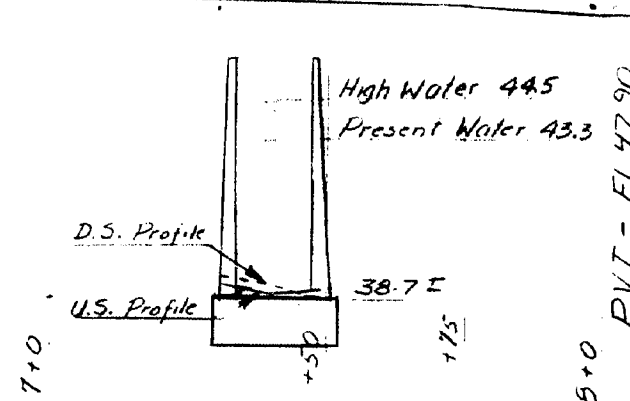
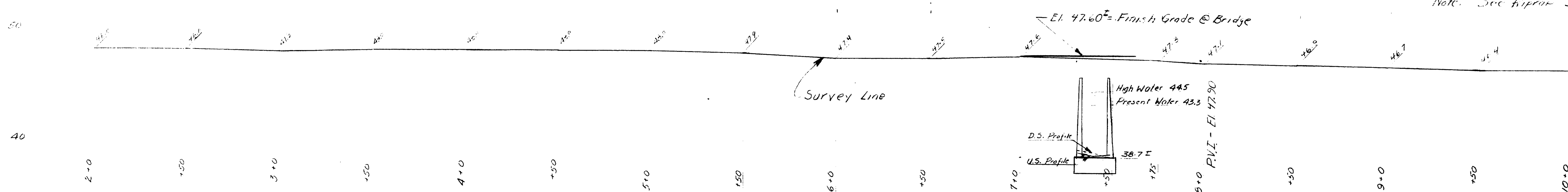


The existing concrete rails will be removed, and the existing curbs will be removed to elev. 47.00'. The existing parapets and portions of the existing wing walls will be removed to elev. 44.54.5. Payment for the removal, and disposal of the structural concrete in the rails, curbs, parapets, and wing walls will be under Section 202- Removal of Structures and Obstructions.



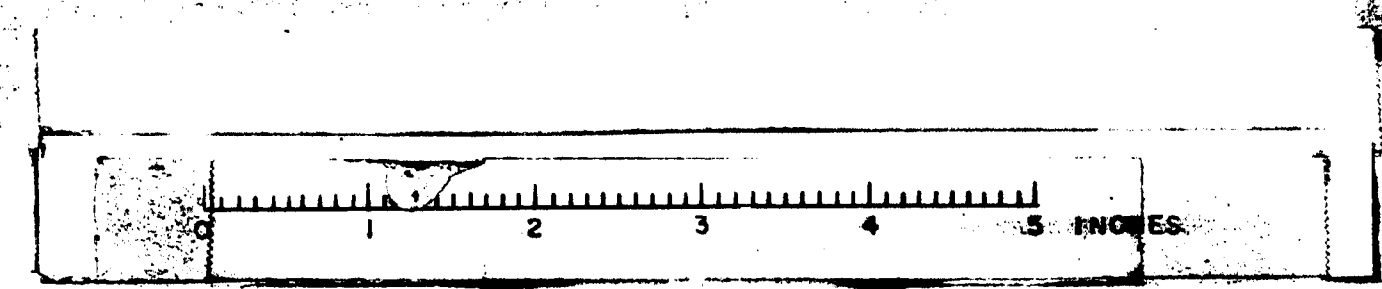
- GENERAL NOTES**
- STEADY:** Sluggish - probably beaver dam B.S. High Water 44.5
 - FOUNDATION:** Large boulders in dirt layer at left pier base. Approaches are on loose boulders in embankments.
 - SUBSTRUCTURE:** Mass concrete Abutments - Fair condition; Parapets and top of wings deteriorated.
 - SUPERSTRUCTURE:** Reinforced concrete slab - good condition; Curbs and Rails deteriorated.
 - APPROACHES:** East approach, 22' bituminous paved, 5 ft. gravel shoulders; poor condition. West approach 20' bituminous paved, 6 ft. gravel shoulders; poor condition.
 - UTILITIES:** N.E.T. & C.M.P. Joint & Single Poles. Stakes to left of road marked Tele Bu Co (location for proposed buried cable). All Utility Plants shall be adjusted as necessary by the respective Utilities.
- Note: See Riprap Section, Sh. (C)

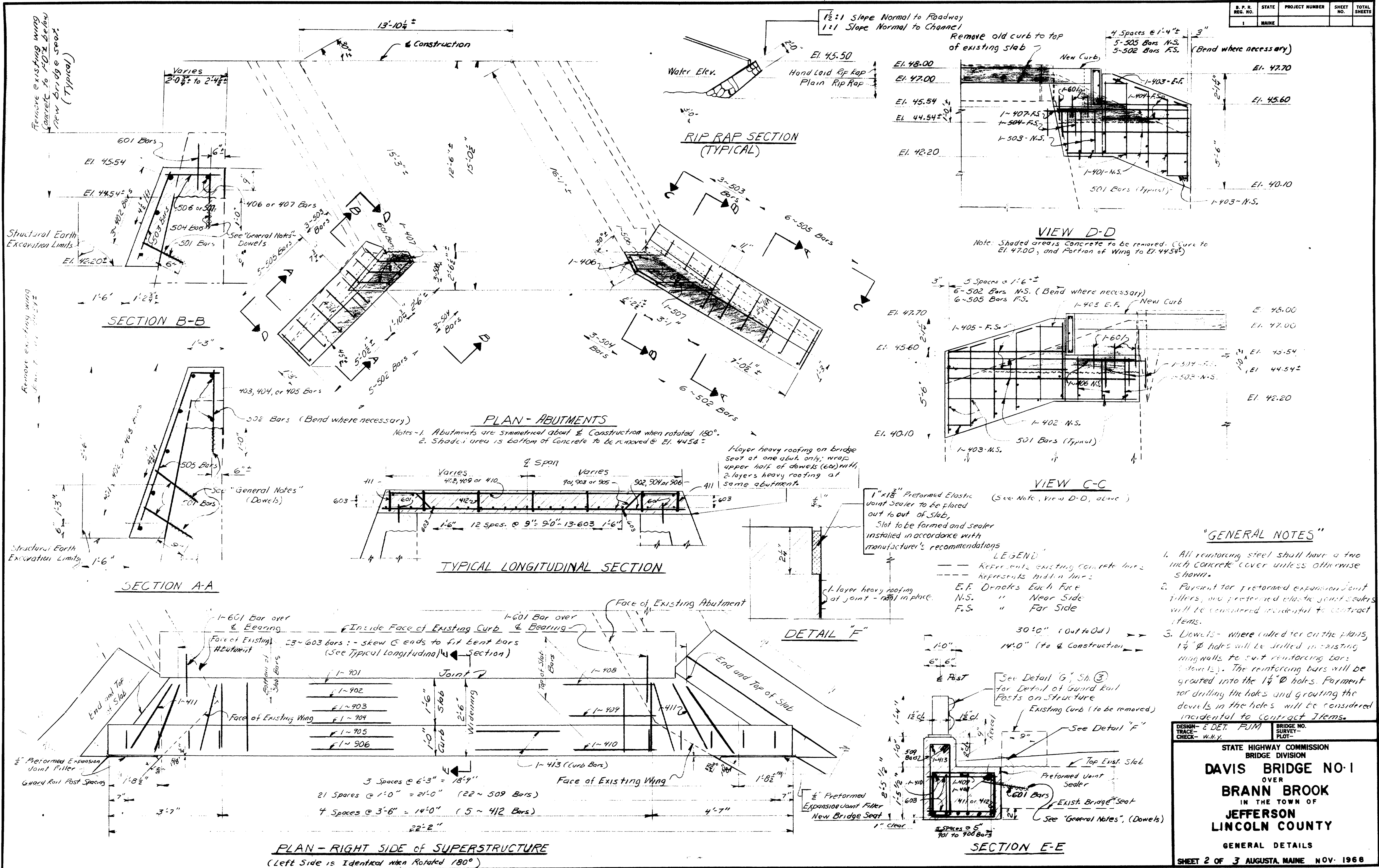


PROFILE ALONG SURVEY
Scale: Horiz. 1" = 30', Vert. 1" = 5'

- SPECIFICATIONS**
- Design: - A.A.S.H.O. Standard Specifications for Highway Bridges, 1965.
 - Live Loading: - H20-44
 - Allowable Stresses: - Concrete - $f_c = 1200 \text{ psi}$ $n = 10$
Reinforcing Steel, Intermediate Grade - $f_s = 20,000 \text{ psi}$
 - Concrete Classification: - All Concrete shall be Class 'A'

DESIGN - P.M.	BRIDGE NO. 3405
TRACE - F. Barnes	SURVEY - F. Barnes
CHECK - W.H.Y.	PLOT - F. Barnes
STATE HIGHWAY COMMISSION BRIDGE DIVISION	
DAVIS BRIDGE NO.1 over BRANN BROOK in the town of JEFFERSON LINCOLN COUNTY	
~ SURVEY ~	
SHEET 1 OF 3 AUGUSTA, MAINE Nov. 1967	



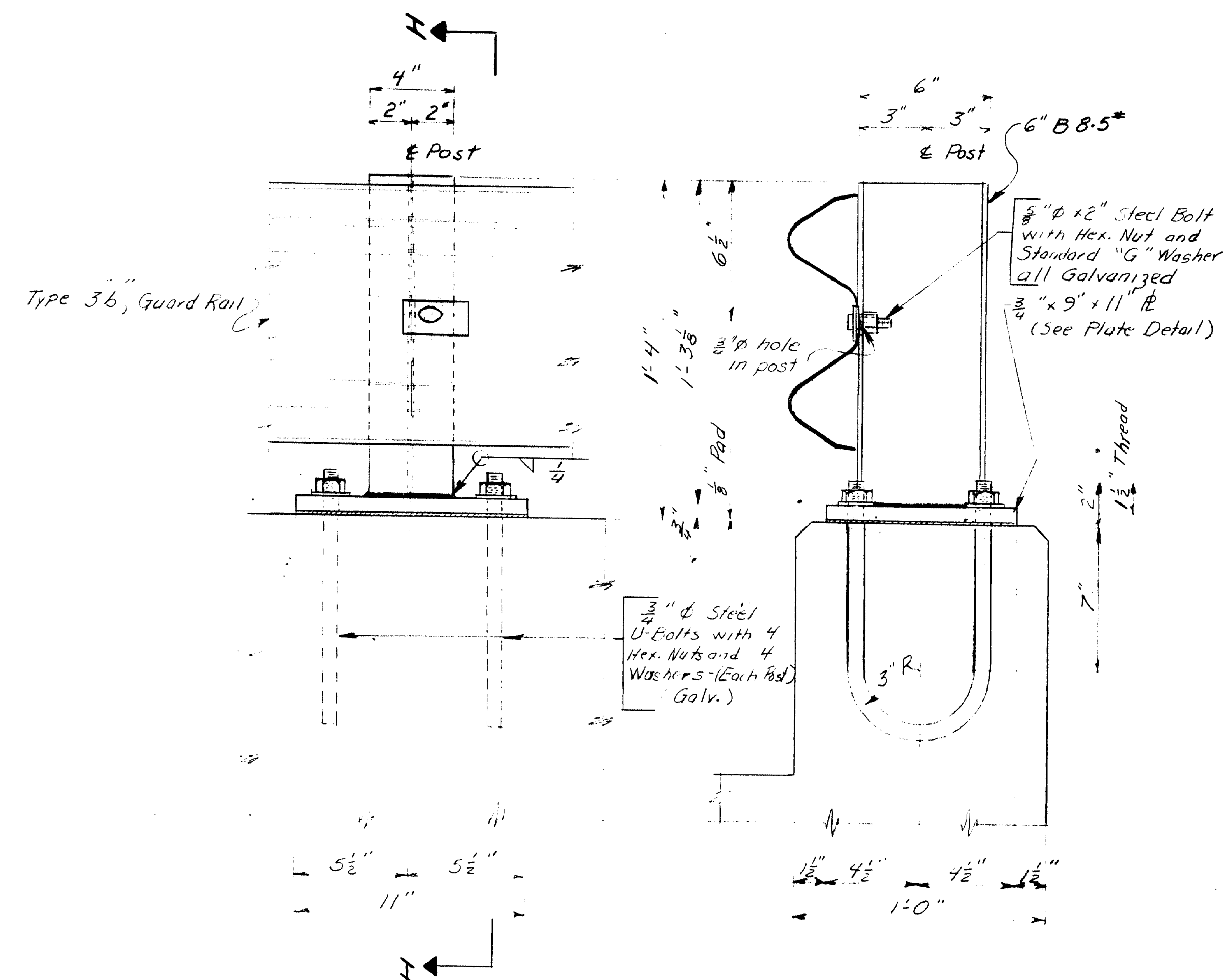


REINFORCING STEEL SCHEDULE

B. P. R. REG. NO.	STATE	PROJECT NUMBER	SHEET NO.	TOTAL SHEETS
1	MAINE			

ABUTMENTS					SUPERSTRUCTURE				
BENT BARS					BENT BARS				
MARK	SIZE	NUMBER	LENGTH	LOCATION	MARK	SIZE	NUMBER	LENGTH	LOCATION
406	#4	2	3'-4"	New Bridge Seats	411	#4	4	8'-0"	Slabs - Transverse
407	#4	2	2'-11"	" " "	412	#4	10	7'-2"	" " "
505	#5	22	6'-3"	Wing Walls	509	#5	44	6'-4"	Curbs
STRAIGHT BARS					STRAIGHT BARS				
401	#4	6	8'-0"	Wing Walls	408	#4	2	17'-6"	Top of Slab - Longitudinal
402	#4	6	12'-6"	" " "	409	#4	2	19'-11"	" " " "
403	#4	12	1'-8"	" " "	410	#4	2	21'-8"	" " " "
404	#4	4	6'-6"	" " "	413	#4	4	21'-10"	Top of Curb - Longitudinal
405	#4	4	9'-6"	" " "					
501	#5	56	1'-6"	Dowels - Wingwalls	601	#6	4	1'-6"	Dowels - Old Slab to New Slab
502	#5	22	4'-0"	" " "	603	#6	46	2'-2"	Bottom of Slab - Transverse
503	#5	12	3'-0"	Wing - walls	902	#9	2	19'-6"	Bottom of Slab - Longitudinal
504	#5	12	1'-9"	Dowels - New Bridge Seats	904	#9	2	21'-4"	" " " "
505	#5	22	6'-3"	Wing Walls	906	#9	2	21'-8"	" " " "
506	#5	8	2'-3"	New Bridge Seats					
507	#5	4	3'-3"	" " "					
601	#6	12	1'-6"	Dowels - Bridge Seats to Slabs					

*NOTES: 1. Number of Reinforcing Bars shown are for both sides of structure.
2. Reinforcing Steel is to be of intermediate grade.
3. Dimensions shown are to center line of reinforcing bars.



DETAIL "G"

SECTION H-H

Req'd: 8 Posts Complete

*For Guard Rail Details not shown, See Standard Details

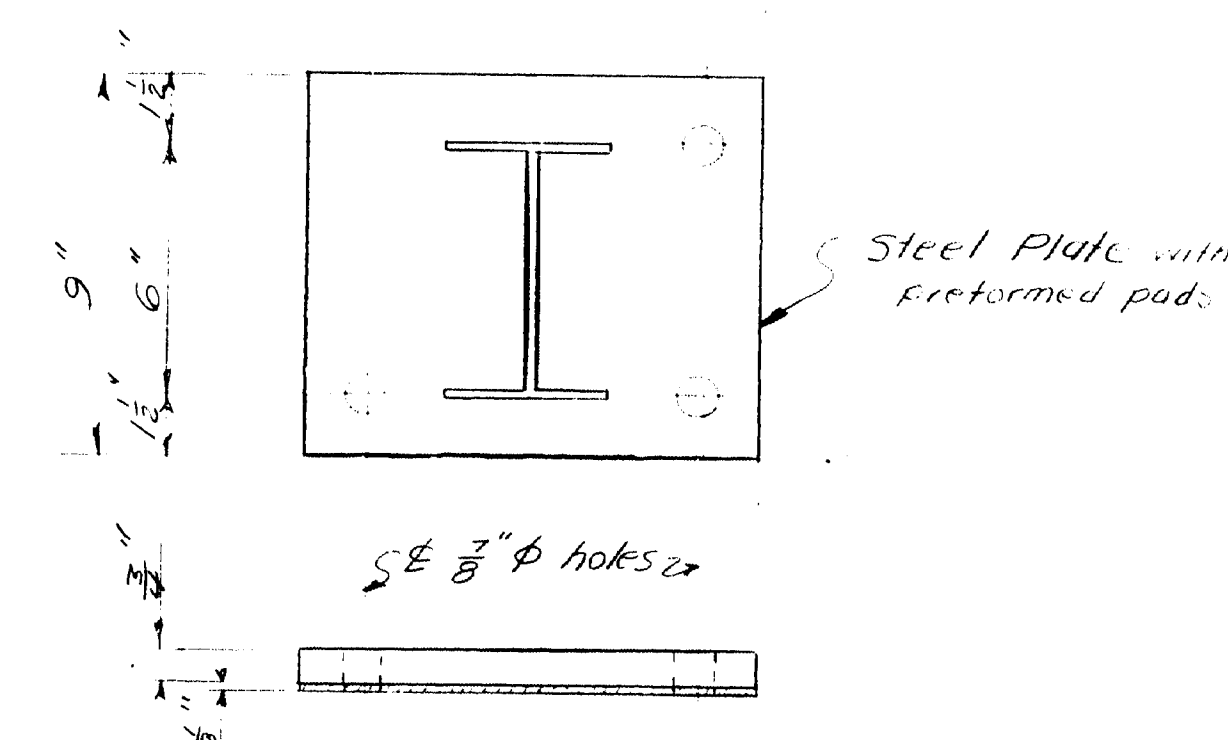


PLATE DETAIL

Req'd: 8 Plates as shown
10 Preformed Pads to fit plates

DESIGN - E. DETAIL - RJM	BRIDGE NO. SURVEY - PLOT -
TRACE - W/LK	CHECK - W/LK
STATE HIGHWAY COMMISSION BRIDGE DIVISION	
DAVIS BRIDGE NO. 1 OVER BRANN BROOK IN THE TOWN OF JEFFERSON LINCOLN COUNTY	
REINFORCING STEEL & GUARDRAIL	
SHEET 3 OF 3 AUGUSTA, MAINE NOV. 1966	

104-108

